

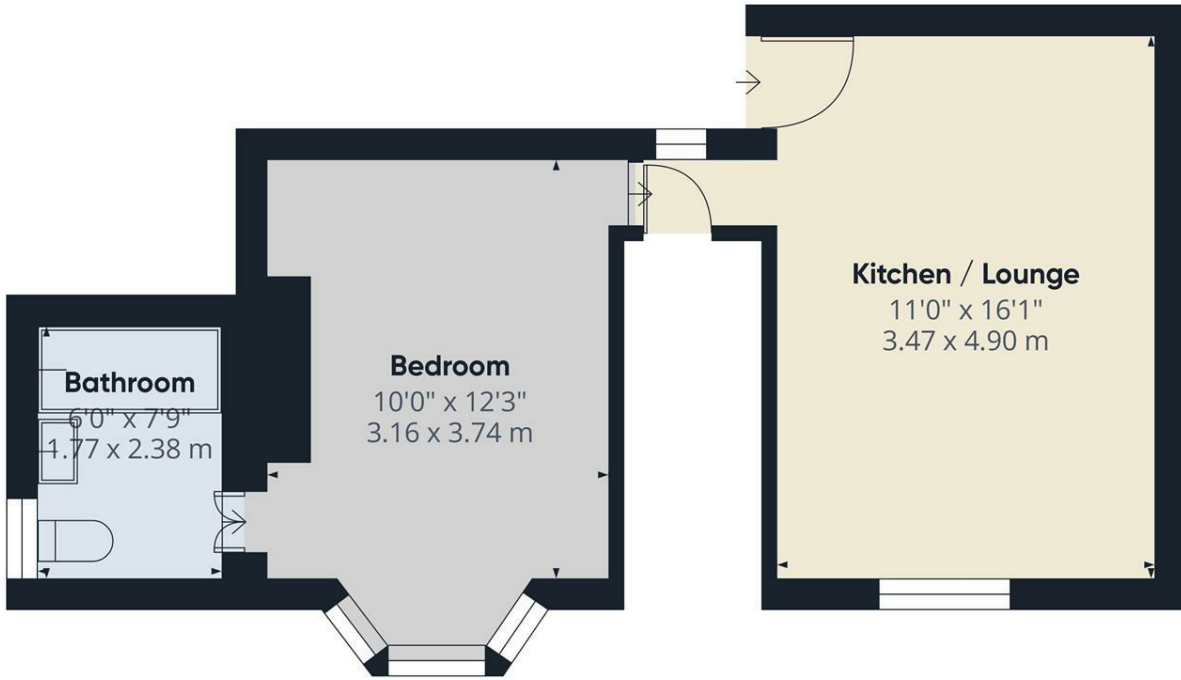


59a Chapel Road, Chesterfield S42 5EL
£650 Per Calendar Month

****DEPOSIT FREE OPTION AVAILABLE**** Located in this popular residential area is this one bedroom ground floor apartment close to a regular bus service, local amenities and schooling.

The property benefits from uPVC double glazing and briefly comprises of: open plan kitchen/lounge, double bedroom and bathroom with three piece white suite and shower over. Outside - One allocated parking space. Added bonus of a utility room with plumbing for a washing machine and a dryer

UNFURNISHED Restrictions - No smokers. Energy Efficiency Rating D. Council Tax Band A.

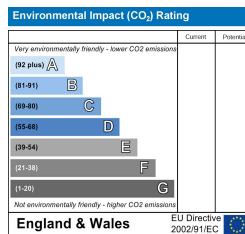
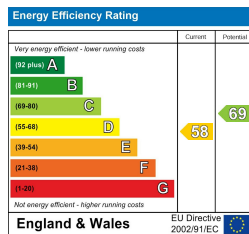


Approximate total area^m
 376.95 ft²
 35.02 m²

(1) Excluding balconies and terraces

While every attempt has been made to ensure accuracy, all measurements are approximate, not to scale. This floor plan is for illustrative purposes only.

GIRAFFE360



Banner Cross
 Hathersage
 Bakewell
 Matlock
www.saxtonmee.co.uk

949-951 Ecclesall Road, Sheffield S11 8TN
 3 Bank View, Main Road, Hathersage S32 1BB
 Matlock Street, Bakewell DE45 1EE
 27 Causeway Lane, Matlock, DE4 3AR

T: 0114 268 3241
 T: 01433 650009
 T: 01629 815307
 T: 01629 828250

E: bannercross@saxtonmee.co.uk
 E: hathersage@saxtonmee.co.uk
 E: bakewell@saxtonmee.co.uk
 E: matlock@saxtonmee.co.uk